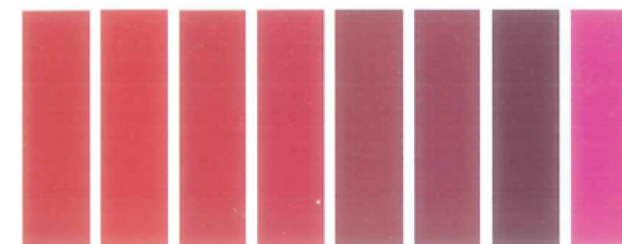


COLORANTS DIRECTS DYESOL-1



	Giallo Dyesol VG 400%	Giallo Dyesol PG	Giallo Dyesol Luce RL 100%	Giallo Dyesol FCR 200%	Arancio Dyesol Luce 76L/M	Arancio Dyesol Luce F26L 200%	Scariatto Dyesol 2FG	Scariatto Dyesol BNL 200%
light	3-4	4	5	5-6	6	5	2-3	3-4
	4	4-5	5-6	6-7	6-7	6	3	3-4
	4-5	5	6	7	6-7	6-7	3-4	4-5
washing	3	3-4	3	3-4	3	3-4	5	4
dry cleaning	-	5	-	-	-	4-5	-	4
perspiration	3	3-4	4	4	4	4	4-5	4-5
	3-4	3-4	4	4-5	4	4	4-5	4
	3-4	4	4-5	3-4	3-4	3-4	4-5	4
water	-	3	-	-	-	3-4	2	3
	5	4	5	5	4-5	4	3-4	3-4
rubbing	4-5	3-4	4	4-5	3-4	3	3	3
coverage of dead cotton								
dischargeability	-	1-2	5	2	4	3	2	3-4
	-	1-2	3	2	3	2	2	3-4

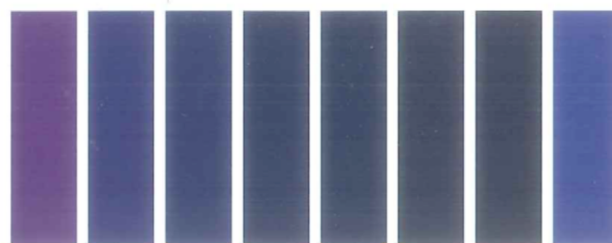


	Scariatto Dyesol 4BS	Scariatto Dyesol 4BN	Rosso Dyesol 8BL	Rosso Dyesol F3B 220%	Rosso Dyesol Luce 6BL/K	Rosso Dyesol BWS	Rubino Dyesol Luce 2BLL 200%	Rosa Dyesol 2FR
light	2	2-3	3-4	3	5	3-4	5	2-3
	3	3	4	3-4	5-6	4	5-6	3
	3	4	4-5	4-5	6	4-5	6	3-4
washing	2	3	1-2	3	3-4	4-5	2	4-5
dry cleaning	4	-	5	-	-	4	4-5	-
perspiration	1-2	4-5	3	4	4	4-5	2-3	4-5
	3	4-5	3	4	4	4	2-3	4-5
	1-2	-	2-3	3-4	4	4	4	4-5
water	1	-	1-2	-	-	2	1-2	-
	4	4-5	4-5	4-5	5	5	4-5	4
rubbing	3-4	2-3	3	3-4	3	3	3	3
coverage of dead cotton								
dischargeability	3-4	-	4	4	5	1	2	2
	2	-	4	4	4-5	1	3-4	2

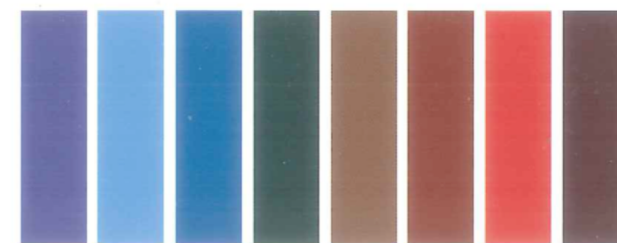
HEXADIS

COLORANTS DIRECTS DYESOL-2

light	1/12
	1/3
	1/1
washing	40°C C06-A1S
dry cleaning	
perspiration	alkaline
	acid
water	severe
	chlorinated 20 mg/l
rubbing	dry
	wet
coverage of dead cotton	
dischargeability	neutral
	alkaline

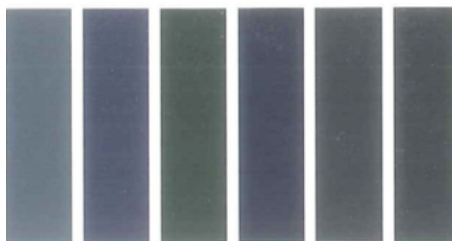


Violetto Dyesol 4BL	Bleu Dyesol 2RL 200%	Bleu Scuro Dyesol BL	Bleu Dyesol 2RLNA 250%	Bleu Dyesol Luce NZR 250%	Bleu Dyesol 2RW ex. conc.	Marino Dyesol Luce FGL	Bleu Dyesol RS
5	4	3	3-4	4-5	2-3	3-4	3-4
6	5	4	5	5	3	4	4-5
6-7	5-6	5	6	5-6	3-4	5-6	5-6
3	4-5	4	3	2-3	4	3	4-5
-	-	5	-	-	-	4	4-5
3-4	4-5	4-5	3-4	4	4-5	3-4	4-5
3-4	4-5	5	3	3-4	4-5	3	4-5
4-5	4-5	4-5	4-5	4-5	4-5	4-5	4-5
-	-	5	-	-	-	2-3	4-5
4-5	4-5	-	-	4	4-5	3-4	-
3	3	-	-	3-4	-	3-4	-
⚠	⚠	✅	✅	⚠	⚠	⚠	⚠
3	4	1	3	4-5	4	3	4
2-3	4	1	3	5	3	4-5	4



Bleu Brillante Dyesol GL	Turchese Dyesol FBL 400%	Turchese Dyesol GL conc.	Verde Dyesol BL 200%	Bruno Dyesol GTL/N	Bruno Dyesol Luce 2G 100%	Bruno Dyesol Luce 3R	Bruno Dyesol Luce RL
5-6	4-5	4	3-4	3-4	4	4-5	4
6	5	4-5	4-5	4	5-6	5	4-5
6-7	6	5-6	5-6	4-5	6	6	5-6
4-5	3	4	4	4	4	4	4
-	4	4	4	4	4	4-5	4
4	3-4	3-4	3-4	4	4	4	4
3-4	3	3	4	4	4-5	4	4
4-5	3-4	3-4	4	4	4-5	4	4
-	2	2	1	2	2	2-3	2
3-4	4	4	4-5	3-4	4	4-5	3-4
3	3-4	3-4	3	3	3	4	3
⚠	✅	⚠	✅	✅	✅	✅	✅
3	3-4	2-3	3-4	2-3	3-4	2-3	3
3	2	1-2	3-4	2	2	2	3

COLORANTS DIRECTS DYESOL-3



	Grigio Dyesol Luce NGL	Grigio Dyesol Luce CGL/K	Nero Dyesol G/C 150%	Nero Dyesol OBV 150%	Nero Dyesol VSF 1500%	Nero Dyesol C-HD
light	3-4	4	3	2	2-3	2-3
washing	4-5	4-5	3-4	3	3	3
dry cleaning	5-6	5-6	4-5	4	4	4
perspiration	4-5	4	3-4	3	3	3
water	4-5	4	4	5	4-5	4
rubbing	4-5	4-5	4	3	3-4	3-4
	4-5	4-5	4-5	3	3-4	3-4
	4	4-5	5	3	3-4	3-4
	2	2	3	2-3	1-2	1-2
	3	3	4-5	4	4-5	4-5
	3	3	2-3	3	3	3
	✓	✓	✗	✓	✓	✓
	3	4	3	4-5	4-5	4-5
	3	4	2-3	4	4-5	4-5

light	1/12
	1/3
	1/1
washing	40°C C06-A15
dry cleaning	
perspiration	alkaline
	acid
water	severe
	chlorinated 20 mg/l
rubbing	dry
	wet
coverage of dead cotton	
dischargeability	neutral
	alkaline

EXPLANATORY NOTES ON THE PATTERN SECTION

All the fastness values refer to the degradation of shade on pure cotton dyeing

Values obtained using the following standards:	
light	UNI EN ISO 105 - B02 : 2014
washing	UNI EN ISO 105 - C06 : 2010 A15
dry cleaning	UNI EN ISO 105 - D01 : 2010
perspiration	UNI EN ISO 105 - E04 : 2013
water, severe	UNI EN ISO 105 - E01 : 2013
chlorinated water	UNI EN ISO 105 - E03 : 2010
rubbing	UNI EN ISO 105 - X12 : 2016

Evaluation of dead cotton coverage obtained with internal Prochimica Novarese methodology.		
	YES	✓
	NO	✗
DISCHARGEABILITY	Prochimica Novarese method	