

# ACID DYESTUFFS

## INFANYL

Fluorescent  
Dyestuff



	Flavinia Fluo Infanyl 10G	Giallo Infanyl 4GL 150%	Giallo Infanyl GR 200%	Giallo Infanyl F-R 360%	Giallo Infanyl 5R	Giallo Infanyl 4RK 250%	Giallo Infanyl RGN/01	Arancio Infanyl F-5G u.c.
1-2	4-5	5	4	5	6	4-5	3-4	
2	5	5-6	4-5	5-6	6-7	5	4	
2-3	5-6	6	5	6	7	6	4-5	
water	severe	5	3-4	4-5	4-5	5	4-5	5
washing	40°C C06-A15	4	4	4	4-5	5	5	5
perspiration	alkaline	3-4	5	3	4-5	4	5	4-5
	acid	3	4-5	2-3	4	4	4-5	4
rubbing	dry	4-5	5	5	4-5	4-5	4-5	4
	wet	3-4	5	4-5	4	3-4	5	4
milling	acid	3	4-5	3	4	4	4	4-5
	alkaline	2	4	4	4	4-5	4-5	4
steaming		3-4	4	5	4-5	3-4	3-4	4
carbonizing		2	4	4	4-5	5	4	5
decatizing	heavy	3	4	4-5	4	4	4-5	4-5
	light	3-4	4-5	4-5	4-5	4	4-5	5
hot pressing	dry	4	5	5	5	4-5	4-5	5
	wet	3	4-5	4	5	4	4-5	5
dyeing class	II	III IV	II	II	II	I II	II	II
dischargeability	3	4	4-5	4-5	3	4-5	5	4
migratory power	3-4	3-4	5	2-3	3-4	4-5	3-4	3-4
suitable for dyeing	wool	✓	✓	✓	✓	✓	✓	✓
	polyamide	✓	✓	✓	✓	✓	✓	✓
	silk	✗	✓	✓	✓	✓	✓	✓



	Scariato Infanyl F2G conc.	Rosso Brillante Infanyl GN/X 100%	Rosso Infanyl BLS/N	Rosso Infanyl E-3GP 200%	Rosso infanyl F-2R conc.	Rosso Solido Infanyl BR/CT	Rosso Infanyl 2B 130%	Rubino Brillante Infanyl F-3B u.c.
4	4	4	4	4	3-4	3-4	3-4	3
4-5	4-5	4-5	5	4-5	4	4	4	4
5	5	5	5-6	5	4-5	4-5	5	4-5
water	5	3-4	4-5	3	4-5	4	4-5	4
washing	4-5	3-4	5	4	4-5	4-5	3-4	4
perspiration	5	3	4-5	2-3	3-4	4-5	4-5	4
	4-5	3	4	2-3	3	4	4	3-4
rubbing	4	4-5	4	4-5	4	4-5	4-5	4
	3-4	4	3-4	4	3-4	4	4	3-4
milling	4-5	3	4	2	4	4	4-5	4-5
	4-5	3	4-5	3	4	4	4	4
steaming	4-5	4	4	4-5	4	4	4	4-5
carbonizing	4	4	3-4	4-5	3	4-5	4-5	4
decatizing	4	4	3-4	4	2	3-4	4	4
	4-5	4-5	4	4-5	3-4	4	4	4-5
hot pressing	5	4	4	4-5	5	4-5	4	4-5
	4	3-4	3-4	4-5	5	4	4	4
dyeing class	III	II	II	II	II	II	III	II
dischargeability	3	3	3	3-4	5	2	4-5	3-4
migratory power	4	4	4	4-5	3	3-4	4	4
suitable for dyeing	wool	✓	✓	✓	✓	✓	✓	✓
	polyamide	✓	✓	✓	✗	✓	✗	✓
	silk	✓	✓	✗	✗	✓	✗	✓

# ACID DYESTUFFS

## INFANYL

light	1/12
	1/3
	1/1
water	severe
washing	40°C C06-A1S
perspiration	alkaline
	acid
rubbing	dry
	wet
milling	acid
	alkaline
steaming	
carbonizing	
decatizing	heavy
	light
hot pressing	dry
	wet
dyeing class	
dischargeability	
migratory power	
suitable for dyeing	wool
	polyamide
	silk

Rubino Brillante Infanyl F-10B	Rubino Infanyl SBL 200%	Rodamina Infanyl B conc.	Violetto Infanyl RW-N conc.	Bleu Brillante Infanyl 2RF 200%	Bleu Infanyl Sol. FBL conc.	Bleu Infanyl FGLM/new	Turchese Infanyl 5G
3	4	1-2	4-5	4-5	4-5	3-4	4-5
3-4	5	2	5	5	5	4-5	5
4	5-6	2-3	6	5-6	5-6	5-6	5-6
4-5	4	3-4	5	3	4	3-4	4-5
5	4	2-3	4-5	3	4	3-4	4
4	4	4	4-5	2-3	4-5	3-4	4-5
4	3-4	3-4	4	2-3	4	3-4	4
5	4-5	4-5	4-5	4	5	3-4	4
4	4	3-4	4	3-4	4-5	3-4	3
4	3-4	3	4-5	2	4-5	3-4	4-5
4	3-4	1-2	3-4	2	5	3-4	4-5
5	4	2-3	4-5	4-5	4-5	3-4	4-5
4	4-5	1-2	4	4	4-5	4-5	4-5
4-5	2-3	1-2	4-5	4	4-5	2-3	3-4
4-5	3	2-3	5	4	5	3-4	4-5
5	4-5	3-4	5	5	5	4-5	4-5
4	3	2-3	5	4	5	3-4	4
II	III	I	II III	II	II	II III	II
4	3	1-2	2-3	2-3	2	2	2-3
4	2-3	3-4	4	4	2	2-3	2

Verde Infanyl BW/2	Verde Infanyl G s.c. 167%	Marino Infanyl P-5R 85%	Marino Infanyl CRD	Nero Infanyl 2B/CT 150%
4-5	4	-	-	-
5	4	3-4	4	5
6	4-5	4-5	4-5	6-7
4-5	4	3-4	4	5
4-5	4	4-5	4-5	4-5
4-5	4	4	4	4-5
4	3-4	3-4	3-4	4-5
4-5	4-5	4-5	4	4
4	3-4	3-4	3-4	2
4	4	4-5	4	4-5
3-4	3-4	4	3	4-5
4-5	4-5	4	4-5	4-5
4-5	4-5	4	4	4-5
3-4	4	1	3-4	3-4
4-5	4-5	2-3	4	4
4-5	5	5	3-4	3-4
4	4-5	4	3	3
II	II	IV	II	II
2-3	2	2-3	4-5	2
3	3	2-3	2-3	2-3

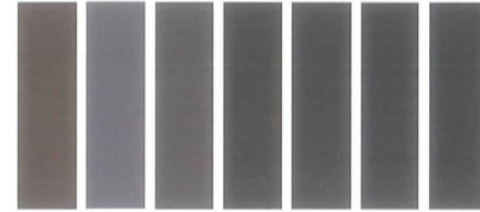
# METALCOMPLEX DYESTUFFS

## INFALAN



	Giallo Infalano K-PR	Giallo Infalano M-3RL	Giallo Infalano SNW/GD	Arancio Infalano RDL 200%	Bordeaux Infalano R 200%	Bordeaux Infalano M-BB	Bleu Scuro Infalano BR 110%	Bleu Marino Infalano W-2RB
light	6	4	5	5-6	5	3	4-5	4-5
	6-7	5	5-6	6	6	3-4	5-6	5-6
water	7	6	6	6-7	6-7	4-5	6	6
seawater	5	4-5	5	5	5	4-5	5	5
washing	-	4-5	5	3	4-5	-	-	-
	5	4	5	5	5	4-5	5	5
perspiration	5	4-5	5	5	5	4	5	5
	5	4	4-5	5	5	4	5	5
rubbing	4-5	-	4-5	4-5	4-5	4	5	5
	4	-	4	4	4	3	4-5	4-5
milling	4-5	3-4	5	3	4-5	4	3	3-4
	5	4	4	5	3-4	4	4	4
steaming	-	-	3	4-5	3-4	4	4	4-5
carbonizing	-	-	4	4	4	3-4	4	4-5
decatizing	4	-	5	4	4	4	4	4
	4-5	-	4	4-5	5	4-5	4-5	4-5
hot pressing	4-5	-	5	5	5	4	4	4-5
	4-5	-	4-5	4-5	5	3-4	4-5	4-5
dischargeability	2-3	3-4	3	3-4	3	2	3	2-3
dyeing	A B	A B	A B	A B	A B	A B	A B	A B
suitable for dyeing	✓	✓	✓	✓	✓	✓	✓	✓
	✓	✗	✓	✓	✓	✓	✓	✗
	✗	✗	✗	✗	✓	✓	✓	✗

## INFALAN S



	Bruno Infalano PRL/GD	Grigio Infalano BLN 200%	Nero Infalano BGL/GD	Nero Infalano VR/N	Nero Infalano L-MS	Nero Infalano MF-GL	Nero Infalano W-RF/2
light	4-5	5-6	5-6	5-6	-	-	-
	5-6	6	6	6	6	6	5-6
water	6	6-7	6-7	6-7	6-7	6-7	6
seawater	5	5	5	5	5	5	5
washing	5	5	5	-	4-5	4-5	-
	5	5	5	5	5	5	5
perspiration	5	5	5	4-5	4-5	4-5	4-5
	4-5	5	4	4-5	3-4	3-4	4
rubbing	5	5	4-5	4-5	4	4	4
	4-5	4-5	4	4	3-4	3-4	4
milling	4-5	5	4-5	4-5	4-5	4-5	4
	4-5	4-5	4-5	4	3-4	3-4	3-4
steaming	4-5	4-5	4-5	4	4	4	4
carbonizing	4	4-5	4	3-4	3-4	4	4
decatizing	4-5	4-5	4	4	4	4	4
	5	5	5	5	5	5	4
hot pressing	4	4-5	5	5	5	5	4
	4	4-5	4-5	4-5	4-5	4-5	3-4
dischargeability	3	3-4	2-3	2	2	2	3
dyeing	A B	A B	A B	A B	A B	A B	A B
suitable for dyeing	✓	✓	✓	✓	✓	✓	✓
	✓	✓	✓	✓	✓	✓	✗
	✓	✓	✗	✗	✓	✗	✗

# METALCOMPLEX DYESTUFFS

## INFALAN



	Giallo Infalan S-3G 100%	Giallo Infalan S-G/Y 150%	Arancio Infalan S-R	Rosso Infalan S-2GN	Rosso Infalan S-G	Rosso Infalan SD-RL	Bordeaux Infalan S-B	Bleu Marino Infalan S-BN
light	5	5-6	5	5	4	4	3	5
water	5-6	6	6	5-6	4-5	5	4	5-6
seawater	6	6-7	6-7	6	5	5-6	4-5	6
washing	5	4-5	5	5	4	5	4-5	5
perspiration	5	3-4	5	4-5	4	4-5	4	5
rubbing	5	3	5	4	4	4	4	4-5
milling	5	4-5	5	5	4	5	4-5	5
steaming	5	4-5	5	5	4	4-5	4-5	5
carbonizing								
decatizing	4	4-5	4-5	4	4-5	4-5	4-5	4-5
hot pressing								
dischargeability								
dyeing	A B	A B	A B	A B	A B	A B	A B	A B
suitable for dyeing	✓	✓	✓	✓	✓	✓	✓	✓
	✓	✓	✓	✓	✓	✓	✓	✗
	✓	✓	✓	✓	✓	✓	✓	✓

## INFASET



	Bleu Marino Infalan S-G	Bleu Marino Infalan SD-RL	Verde Oliva Infalan S-G	Bruno Infalan S-GR	Grigio Infalan SD-2G	Giallo Infaset 4GN	Giallo Infaset 2R
light	5	-	5	4-5	4	5	5-6
water	5-6	5-6	5-6	5-6	5	5-6	6
seawater	6	6-7	5-6	6	5-6	6	6-7
washing	4-5	4-5	5	4-5	5	5	4-5
perspiration	4	5	5	4-5	5	5	5
rubbing	4	4-5	5	4-5	5	4-5	4-5
milling	4-5	5	5	4-5	5	5	5
steaming	4-5	4-5	5	4-5	4-5	4-5	5
carbonizing							
decatizing	4-5	4-5	4-5	5	5	4-5	4-5
hot pressing							
dischargeability						5	4-5
dyeing	A B	A B	A B	A B	A B	C D	C D
suitable for dyeing	✓	✓	✓	✓	✓	✓	V
	✗	✓	✓	✓	✓	✓	V
	✓	✓	✓	✓	✓	✓	V

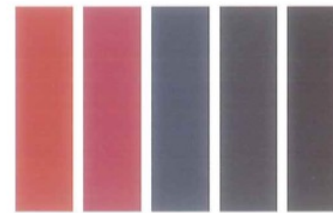
light	1/12
water	1/3
seawater	1/1
washing	severe
perspiration	40°C C06-A1S
rubbing	60°C C06-C1S
milling	alkaline
steaming	acid
carbonizing	dry
decatizing	wet
hot pressing	acid
dischargeability	alkaline
dyeing	methods
suitable for dyeing	wool
	polyamide
	silk



# METALCOMPLEX DYESTUFFS

INFALAN

	1/12
light	1/3
	1/1
water	severe
seawater	
washing	40°C C06-A1S 60°C C06-C1S
perspiration	alkaline acid
rubbing	dry wet
milling	acid alkaline
steaming	
carbonizing	
decatizing	heavy light
hot pressing	dry wet
dischargeability	
dyeing	methods
suitable for dyeing	wool polyamide silk



Rosso Dyelán GREN	Rosa Dyelán BE 120%	Bleu Dyelán 2BGN 250%	Bleu Marino Dyelán 2RLB/N	Nero Dyelán YHT 200%
4-5	4-5	4	-	-
5	5	4-5	6	6
5-6	6	4-5	7	7
4	5	4	4	4
4-5	5	5	4-5	4-5
4	4-5	4-5	3-4	3-4
3-4	4	4	3	3
5	4-5	4	3-4	3-4
4	4-5	4	3-4	3-4
4-5	4	4	3-4	3-4
4-5	3-4	3-4	4	4
4	3	4-5	4-5	4-5
4	4	4	4	4
4	3-4	4	4	4
4-5	4	4-5	4-5	4-5
5	3-4	3	4	4
4-5	4	4	4	4
E	E	E	E	E
V	V	V	V	V
△	△	△	△	△
△	△	△	△	△

## ACID DYESTUFFS



INFANYL

	1/12
light	1/3
	1/1
water	severe
washing	40°C C06-A1S
perspiration	alkaline
	acid
rubbing	dry
	wet
milling	acid
	alkaline
steaming	
carbonizing	
decatizing	heavy
	light
hot pressing	dry
	wet
dyeing class	
dischargeability	
migratory power	
suitable for dyeing	wool
	polyamide
	silk

## EXPLANATORY NOTES ON THE PATTERN SECTION

All the fastness values refer to the degradation of shade on pure wool dyeing.

Values obtained using the following standards:	
light	UNI EN ISO 105 - B02 : 2014
water, severe	UNI EN ISO 105 - E01 : 2013
washing	UNI EN ISO 105 - C06 : 2010 A1S
perspiration	UNI EN ISO 105 - E04 : 2013
rubbing	UNI EN ISO 105 - X12 : 2016
milling	UNI EN ISO 105 - E14 : 1998
	UNI EN ISO 105 - E12 : 2010
steaming	UNI EN ISO 105 - E11 : 1998
carbonizing	UNI EN ISO 105 - X02 : 1998
decatizing	UNI EN ISO 105 - E10 : 1998
hot pressing	UNI EN ISO 105 - X11 : 1998

	YES	
	NO	
DISCHARGEABILITY	Prochimica Novarese method	
MIGRATORY POWER	Prochimica Novarese method	